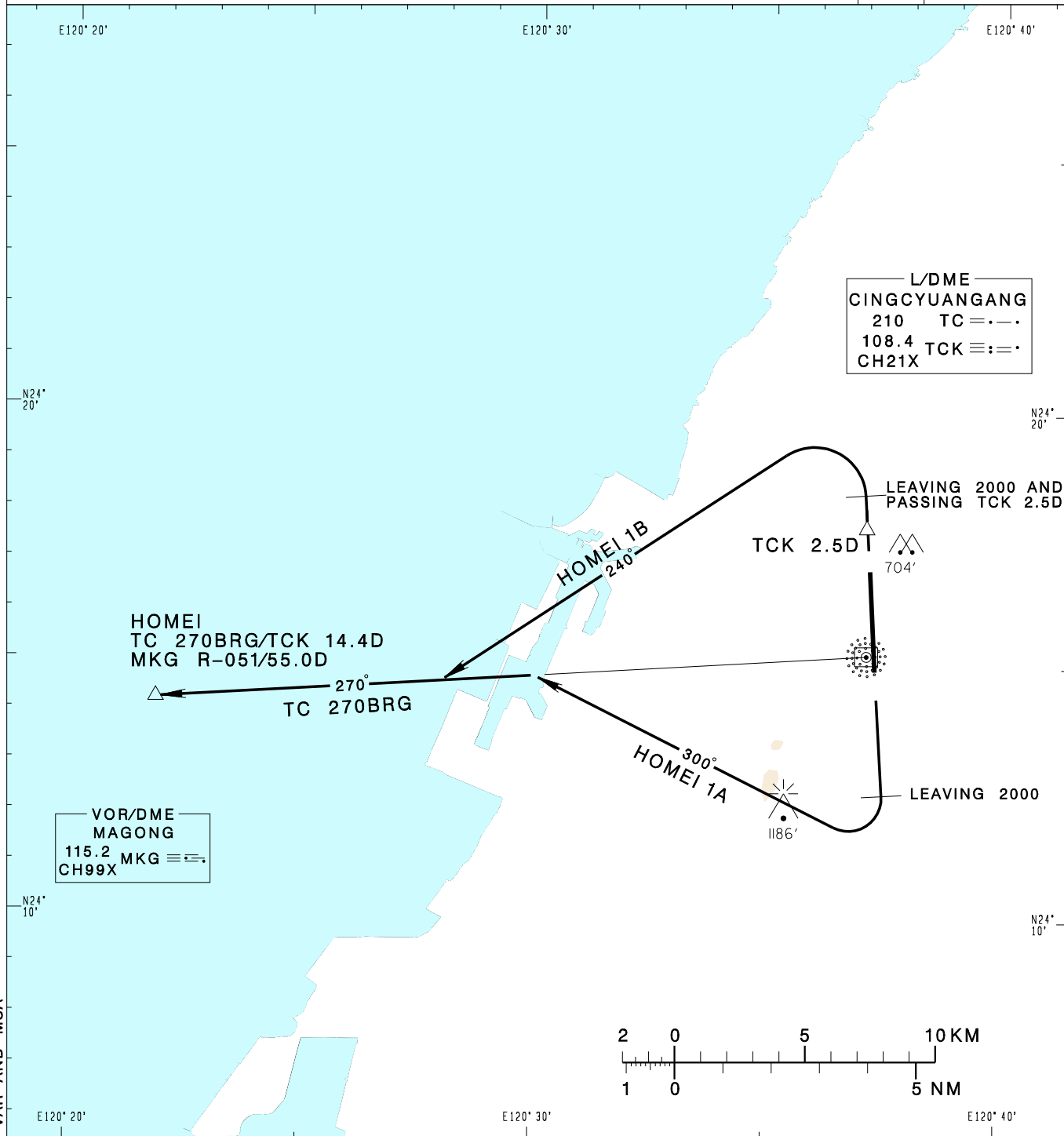


臺中/清泉崗機場
TAICHUNG/CINGCYUANGANG AD

RCMQ SID
HOMEI 1A(RWY18)
HOMEI 1B(RWY36)

TAIPEI APP 130.1 129.6	TAICHUNG TWR 118.75 120.25	ATIS 127.75	VAR 5°W-2022 ↑	13600' MSA ARP 25NM	
Apt Elev: 665'		Trans Level: FL130			Trans Alt: 11,000'
BEARINGS ARE MAGNETIC; DISTANCES ARE NAUTICAL MILES; ELEVATIONS, HEIGHTS IN FEET					



CHANGES: UPDATE MAG VAR AND MSA

HOMEI ONE ALFA DEPARTURE
Depart on RWY HDG until leaving 2,000, turn right HDG 300 to track TC 270BRG to HOMEI to join A1.

HOMEI ONE BRAVO DEPARTURE
Depart on RWY HDG until leaving 2,000 and passing TCK 2.5D, turn left HDG 240 to track TC 270BRG to HOMEI to join A1.

NOTE
1. HOMEI 1A, HOMEI 1B:
Requires a minimum climb gradient of 5% (300ft/NM) until 2000ft.
2. Caution close-in obstacles (trees) 704ft MSL, 150m northeast of RWY36 DER.